

TRADE AND TRANSPORT INFORMATION ALONG THE CENTRAL CORRIDOR

<https://observatory.centralcorridor-ttfa.org/>



About the Central Corridor Transport Observatory

“Your One Stop for Statistics and Information on Performance of the Central Corridor”

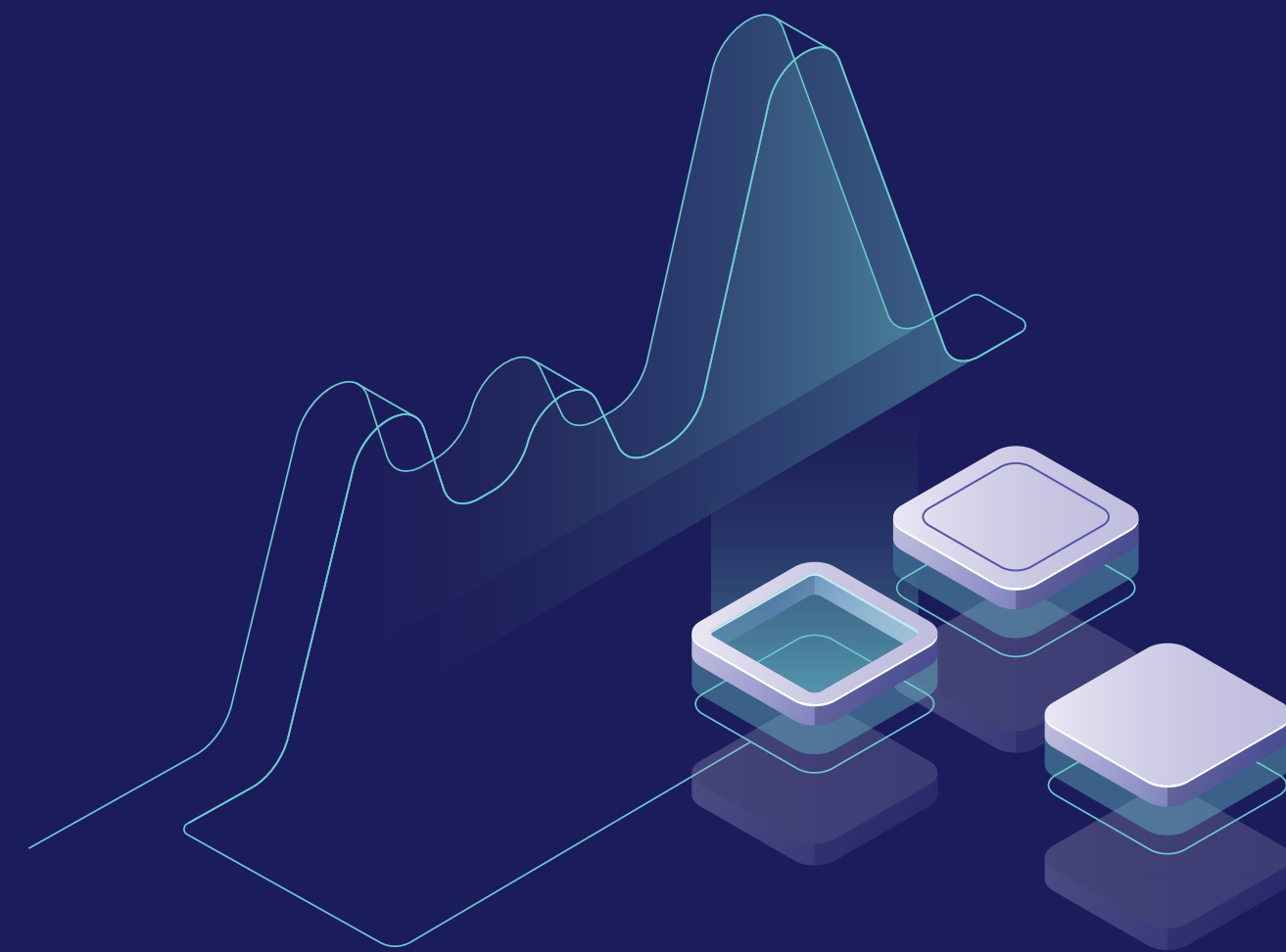
The Central Corridor Transit Transport Facilitation Agency (CCTTFA) with support from TradeMark East Africa (TMEA) and funding from Denmark, Ireland, Norway, UKAID and USAID, set up the Central Corridor Transport Observatory (CCTO) aimed at monitoring the performance of the logistics chain along the Central Corridor. The Transport Observatory provides reliable and timely information to policy makers in the region, facilitating formulation of policies that lead to better transit, trade facilitation and cooperation between Central Corridor Member States.



Prior to the existence of the Transport Observatory Portal, various challenges were faced by CCTTFA and its stakeholders, some of these include:

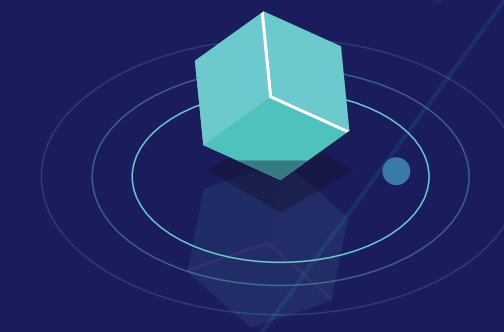
- Manual collection and verification of data that was costly, time consuming and led to delayed publication of various reports.
- Lack of modern infrastructure presenting limitations in collection and processing of crucial information from various sensors like the Global Positioning System (GPS), used to compute metrics including transit times.
- Lack of a timely, credible, and reliable source of data on logistics, trade, and transport leading to dependence on unreliable sources by stakeholders who include policy makers, investors, transporters .
- Slow resolution of inefficiencies plaguing the Central Corridor caused by lack of adequate information needed by policy makers.
- With the absence of the observatory, it was difficult for policy makers to figure out where trade bottlenecks in the corridor existed and how to tackle the challenges they presented. This led to slow resolution of inefficiencies and increased the cost and time of conducting trade along the central corridor.

Benefits of the Central Corridor Transport Observatory



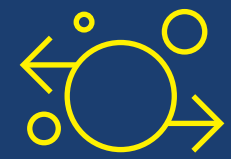
- **Automated collection of transport data** from various sources and stakeholders using various tools and technologies including mobile phone surveys.
- **Increased efficiency** that enables storage, analysis and processing of the trade data using modern tools like Business Intelligence (BI), Datawarehouse and the Geographic Information System (GIS). The portal is hosted on a modern tier 2 server room which ensures the portal is available and accessible online more than 95% of the time per year.

- **Seamless dissemination of trade reports and processed data** as the portal is linked to social media channels .The processed data can also be displayed in a Geographic Information System (GIS) which helps to visualize the location of several trade infrastructure like roads, railways, and ports on an online digital map.
- **Increased access to information** through the online recommendation matrix published on the portal, enabling various stakeholders from countries across the entire corridor like ministries of transport, customs, trade, private transports, etc. can get timely information on what they need to do to address challenges and to improve trade in the region and their respective countries.



What information will you be able to access through the observatory/system?

Information on more than 38 indicators grouped into 6 categories:



Volumes of Transactions



Transit Times



Cost of Services



Efficiency and Productivity



Greenhouse Gas Emissions



Safety

Among these categories, specific indicators include the Ship Turnaround Time, Transport rates, Volume of cargo to various destinations, Transit time to various destinations, Container dwell time, Truck turnaround time at the port of Dar es Salaam, imports and exports per country etc.

Access to periodical reports published by CCTO and special features on the performance of the Central Corridor..



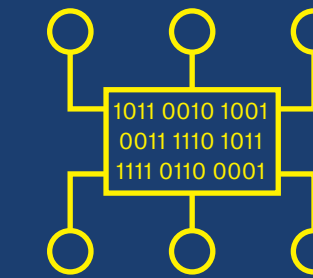
.. including annual reports, biannual reports, quarterly reports, newsletters, Joint Northern & Central Corridor reports and Green House Gas Emission updates.

A Geographic Information System (GIS) module.



The module allows users to view the location and status of various infrastructure. The GIS module with assistance from GPS data allows for the automatic computation of time taken by Central Corridor users at various key locations including weighbridges, customs checkpoints, border posts and more.

A digitized recommendation matrix tracker..



.. which provides for listing of all recommendations and findings with the provision to view statuses, make follow ups as well allow generation of stakeholder specific status reports. The tracker also provides for listing of feedback as well as sharing with relevant stakeholders.

How to access the Observatory

1



Open your browser

2

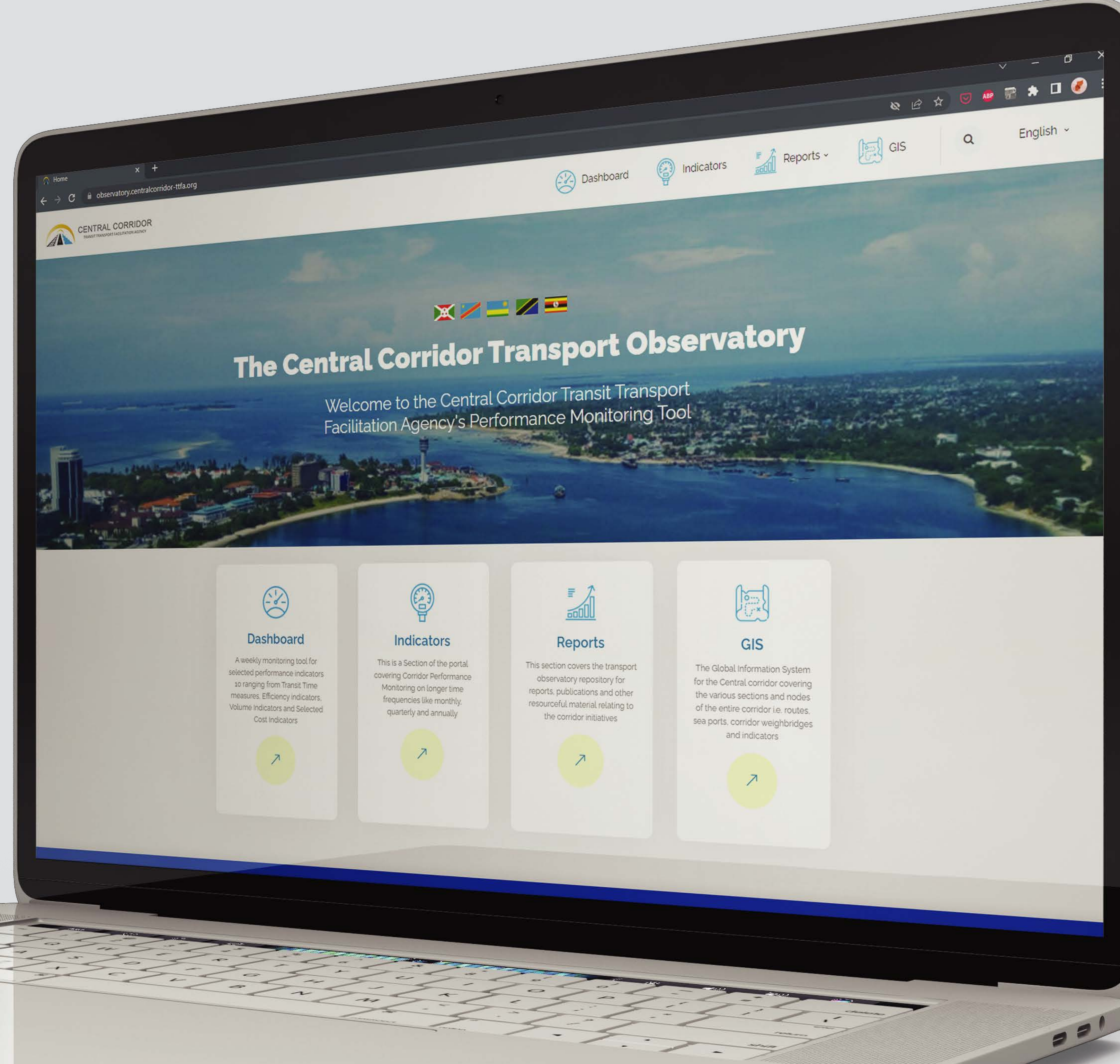


Scan the QR code above or type the URL:
<https://observatory.centralcorridor-ttfa.org/>

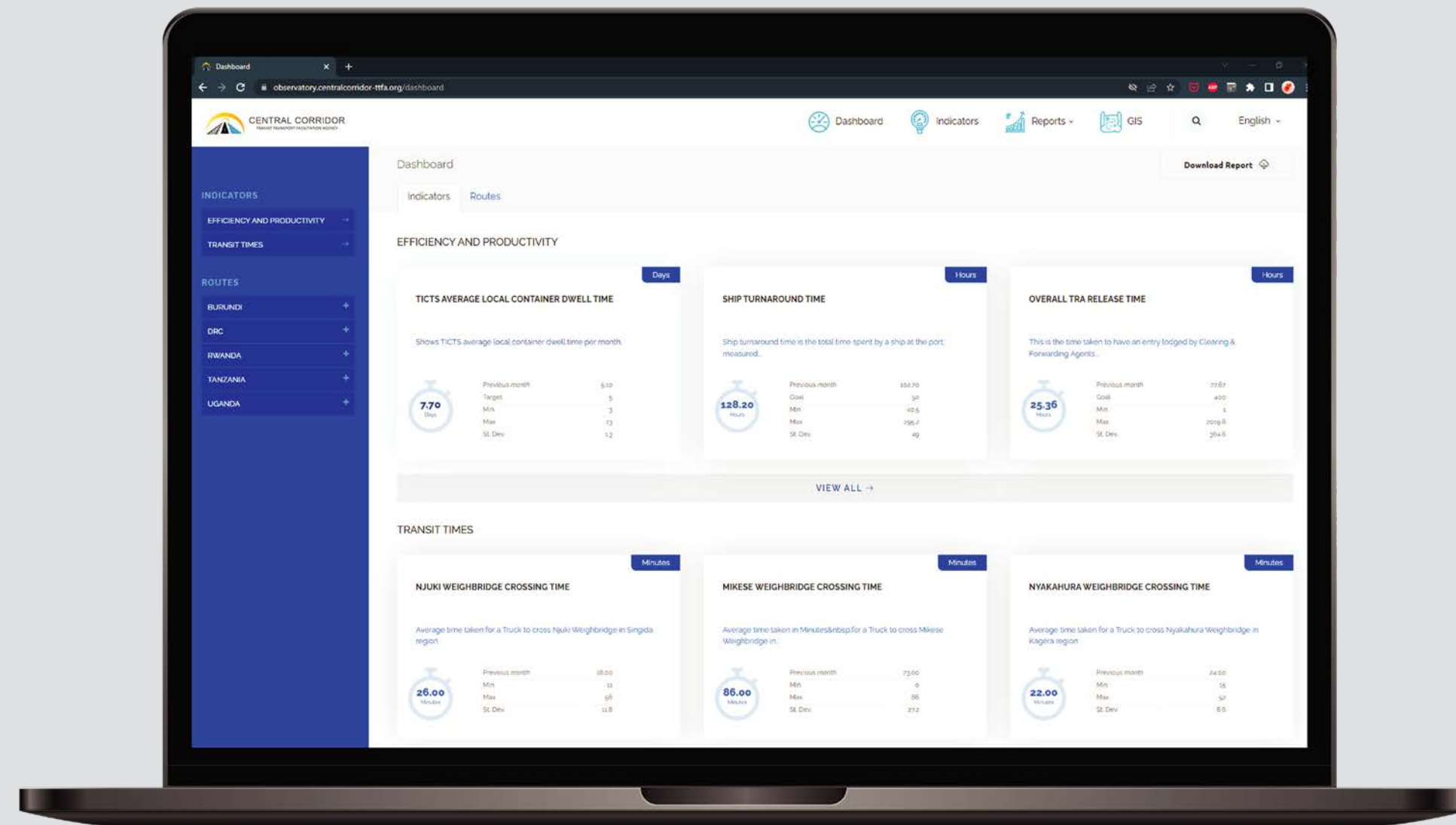
3



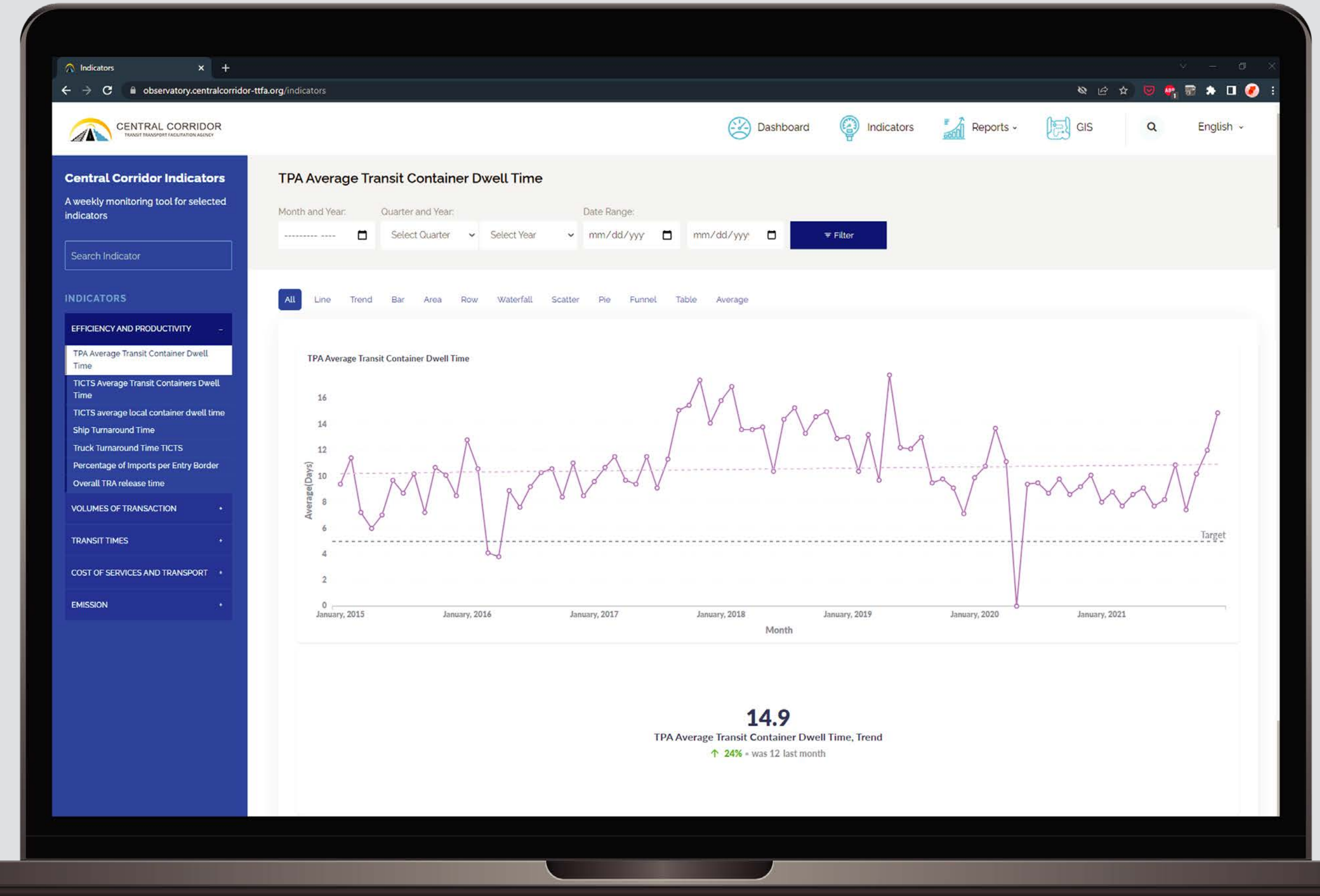
View the home page as displayed



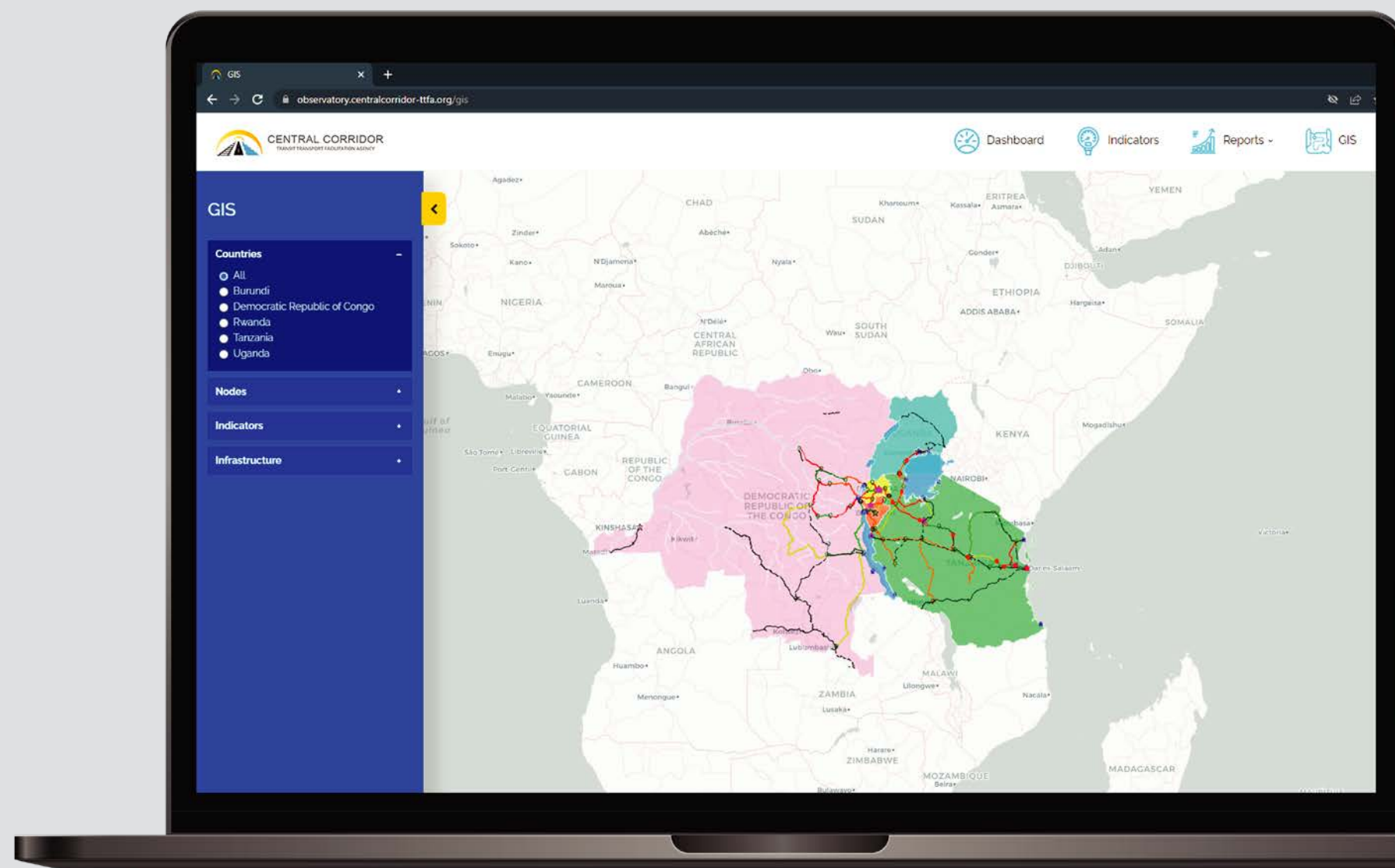
The Dashboard Page



The Indicators Page



The GIS Page



Background

TradeMark East Africa (TMEA) signed a financial agreement with CCTTFA in March 2018 worth USD 1,300,000 to support various efforts towards making the Central Corridor Transport Observatory Programme a success.

Some of these efforts include:

- i) Upgrade of the server room for CCTTFA so that the observatory can run on more reliable infrastructure.
- ii) Enhancement of the transport observatory toolkit to incorporate more modern features including a Business Intelligence Toolkit, an Enterprise Service Bus and an improved Geographic Information System.
- iii) Support efforts in collection, analysis, processing and publishing of data on the performance of the corridor.
- iv) Development of a mobile application that will be used for collecting data from the field and uploading to the TOs servers in real time.





The Central Corridor Transit Transport Facilitation Agency

The Central Corridor Transit Transport Facilitation Agency (CCTTFA) is a multilateral organization established by the countries of Burundi, Rwanda, Uganda, DRC and Tanzania, with the main objective of fostering regional transport and economic integration. The Central Corridor is an integrated multimodal transport and logistics network that connects the Port of Dar es Salaam by road, rail and inland waterways to Burundi, Rwanda, Uganda and Eastern DRC. The corridor and the port of Dar es Salaam form part of the backbone of the regional transportation system in East and Eastern Central Africa carrying the import and export of the five countries with a population of more than 200 million people. CCTTFA Secretariat is involved with different projects with the goal of reducing cost of transport as well as transit time between the port of Dar es Salaam and various destinations.

www.centralcorridor-ttfa.org



TradeMark East Africa

TradeMark East Africa (TMEA) is an aid-for-trade organisation that was established in 2010, with the aim of growing prosperity in East Africa through increased trade. TMEA operates on a not-for-profit basis and is funded by the development agencies of the following countries: Belgium, Canada, Denmark, European Union, Finland, Ireland, Netherlands, Norway, United Kingdom and United States of America. TMEA works closely with regional intergovernmental organisations, including the African Union (AU), East Africa Community (EAC), Intergovernmental Authority on Development (IGAD), Common Market for East and Southern Africa (COMESA), Southern Africa Development Community (SADC), national governments, the private sector and civil society organisations.

www.trademarkea.com